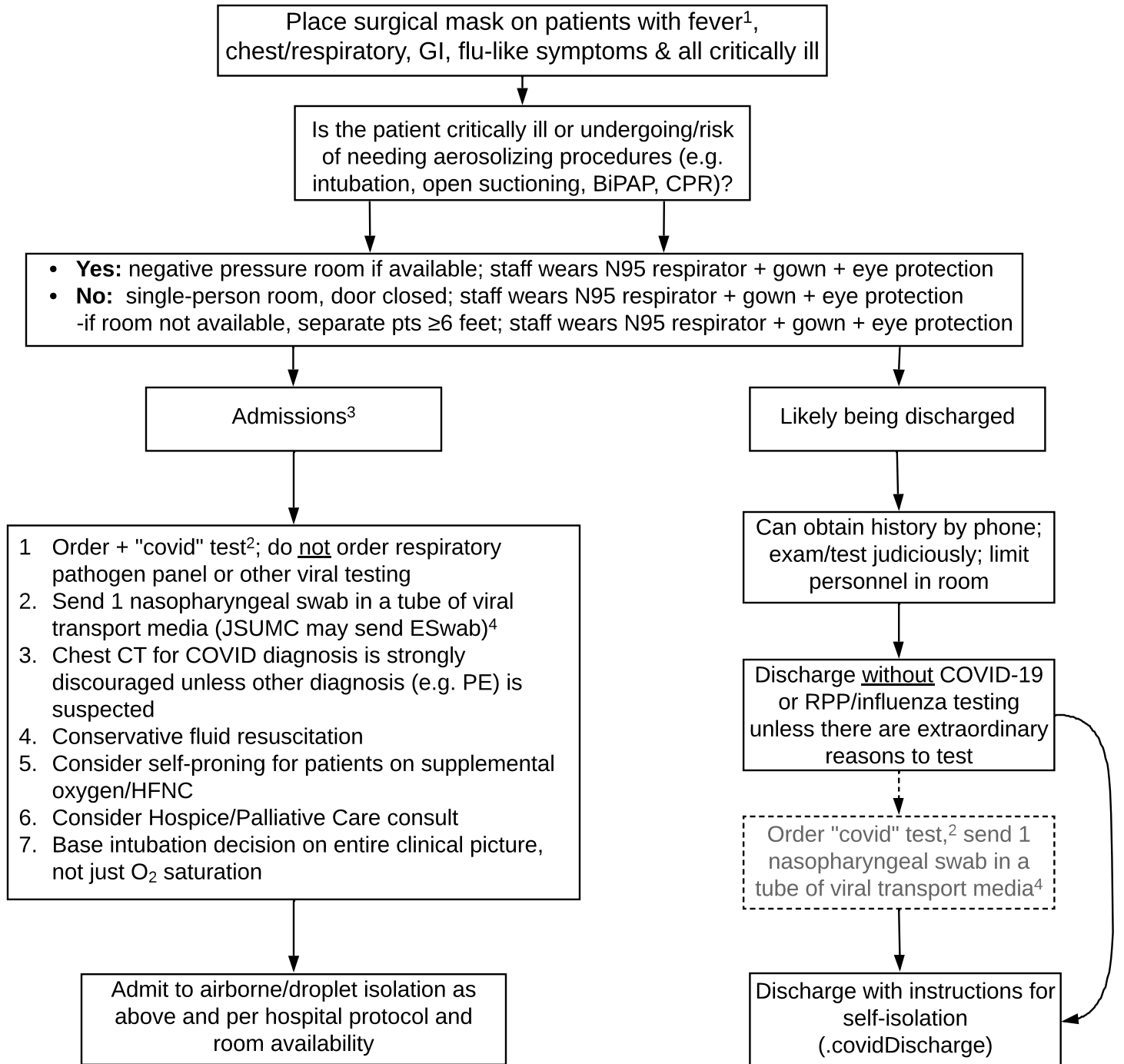




# COVID-19 care/testing pathway for adult & pediatric ED patients with signs/symptoms suspicious for COVID-19 infection



**Notes:**

Guidance is to help with medical decision-making. Final decisions should be based on clinical judgement.

1. Fever may be either measured or subjective.
2. Search for "covid" or "coronavirus".
3. Criteria to consider for admission: O2 sat <92%, RR>24, AMS, po intolerant, older age, comorbidities.
4. Tube with viral transport media:



ESwab tube:

